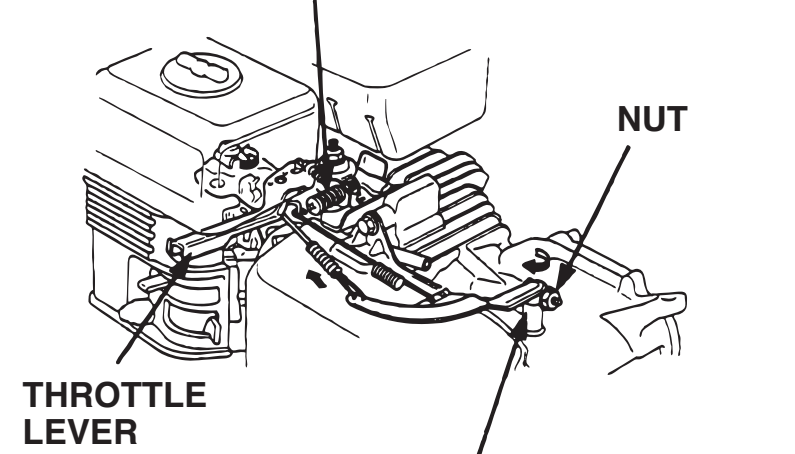


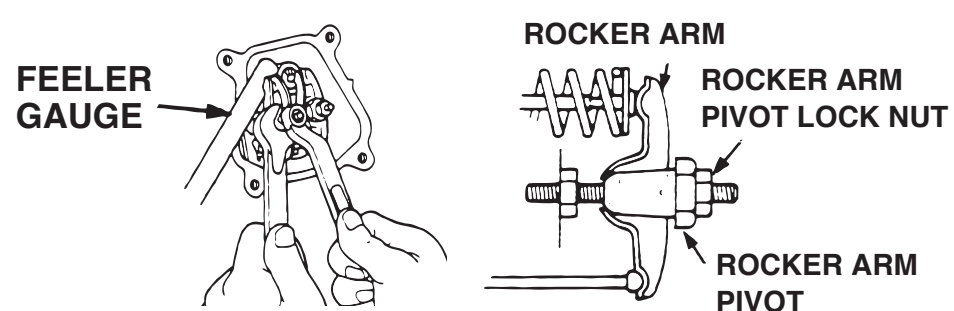
GOVERNOR

THROTTLE LEVER LIMITING SCREW



Maximum speed ()DS type	3,850±150 min ⁻¹ (rpm) (3,750±150 min ⁻¹ (rpm))
-----------------------------	--

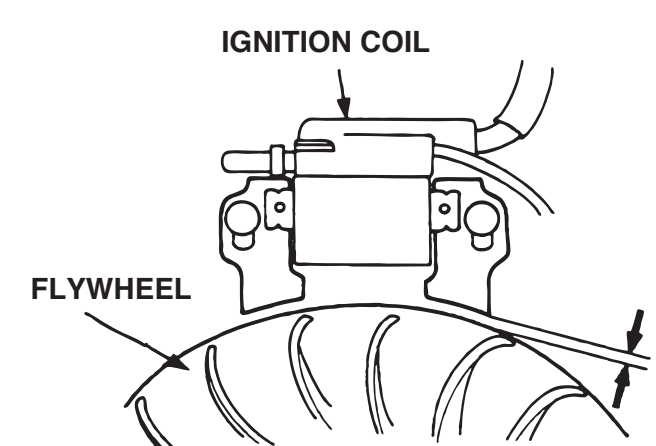
VALVE CLEARANCE



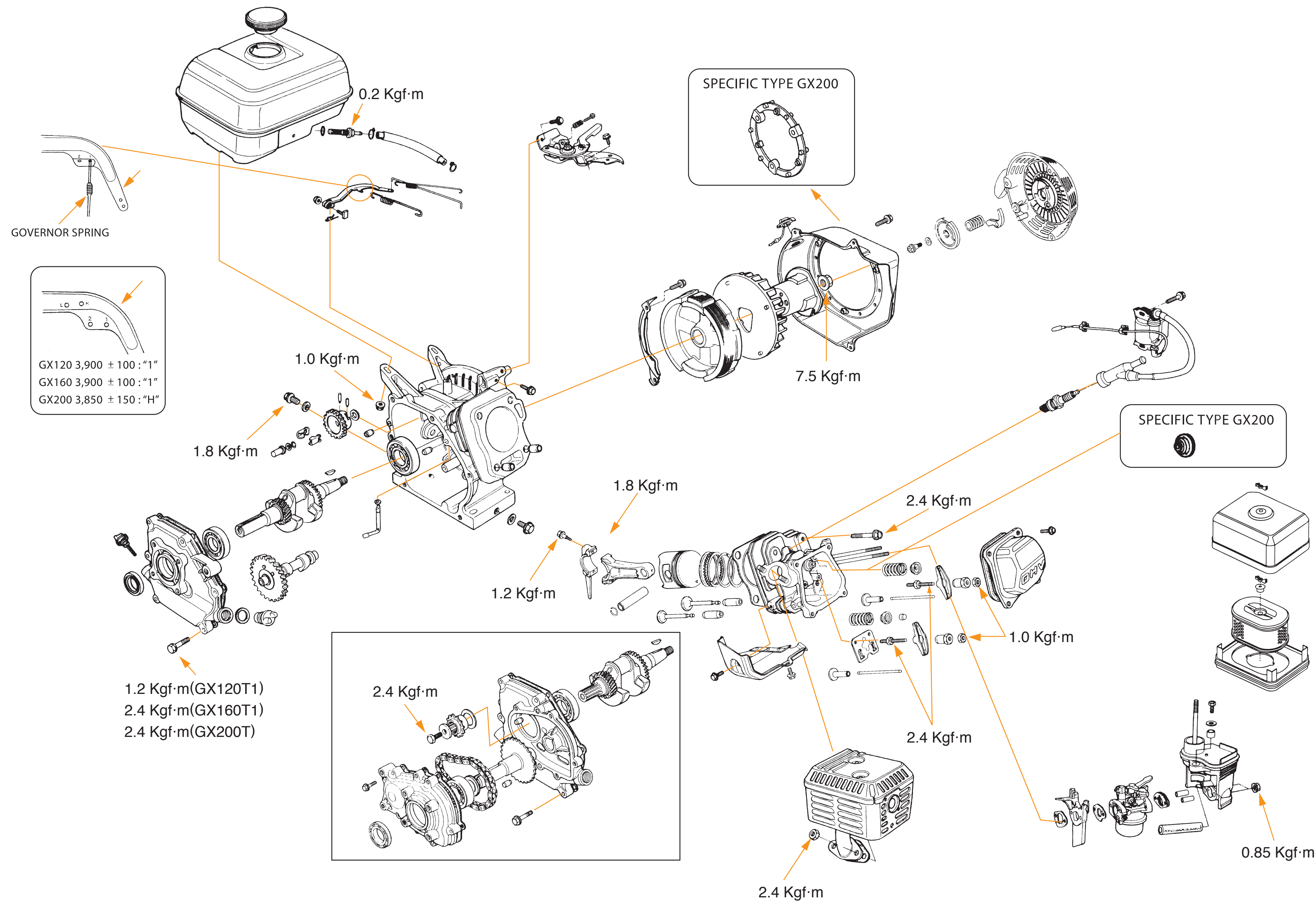
To increase valve clearance, screw out.
To decrease valve clearance, screw in.

Standard valve clearance	IN	0.15±0.02mm (0.006±0.001 in)
	EX	0.20±0.02mm (0.008±0.001 in)

IGNITION COIL AIR GAP

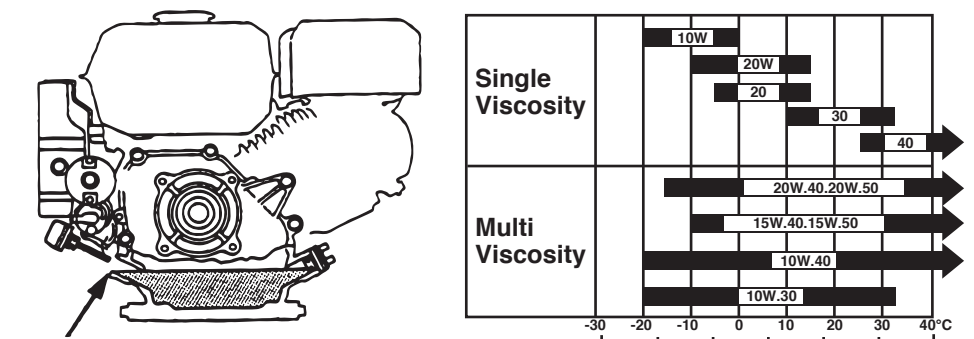


Specified clearance	0.4±0.2mm (0.016±0.008 in)
---------------------	----------------------------



© Honda Motor Co., Ltd. Power Product Service Division.

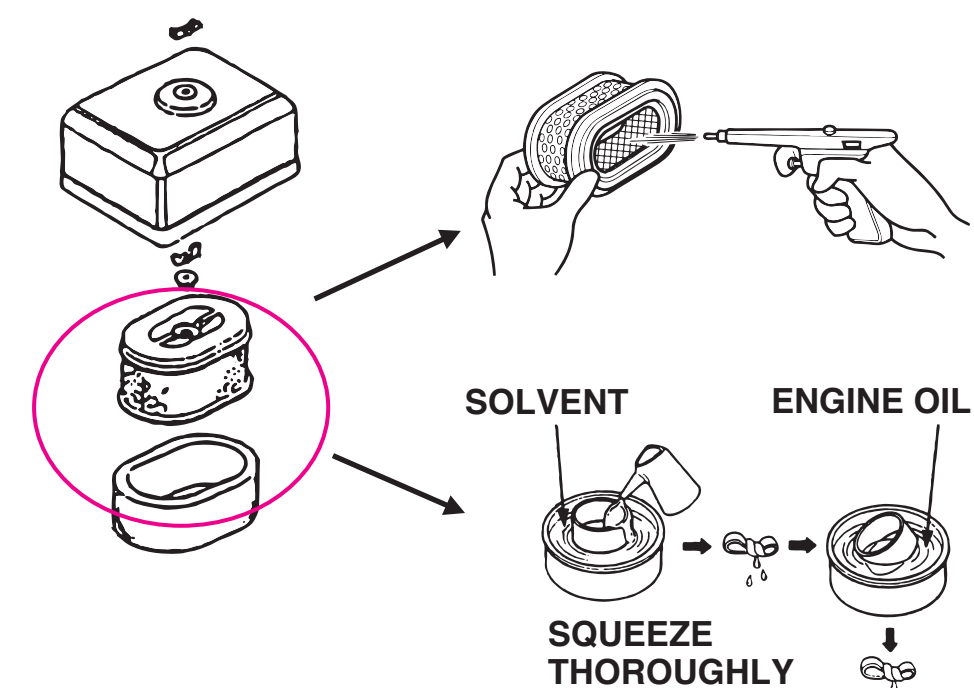
ENGINE OIL



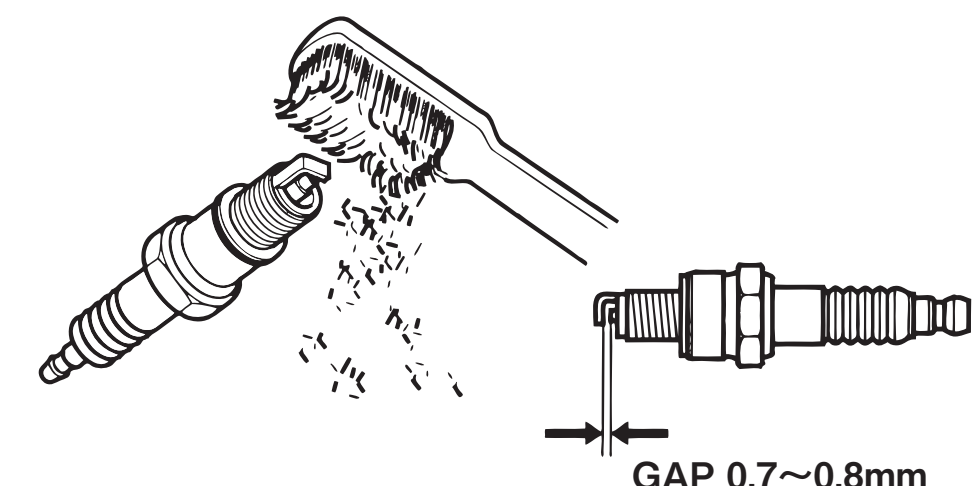
"UPPER" LEVEL

Engine oil capacity 0.6 L (0.63 US qt, 0.53 Imp qt)

AIR CLEANER

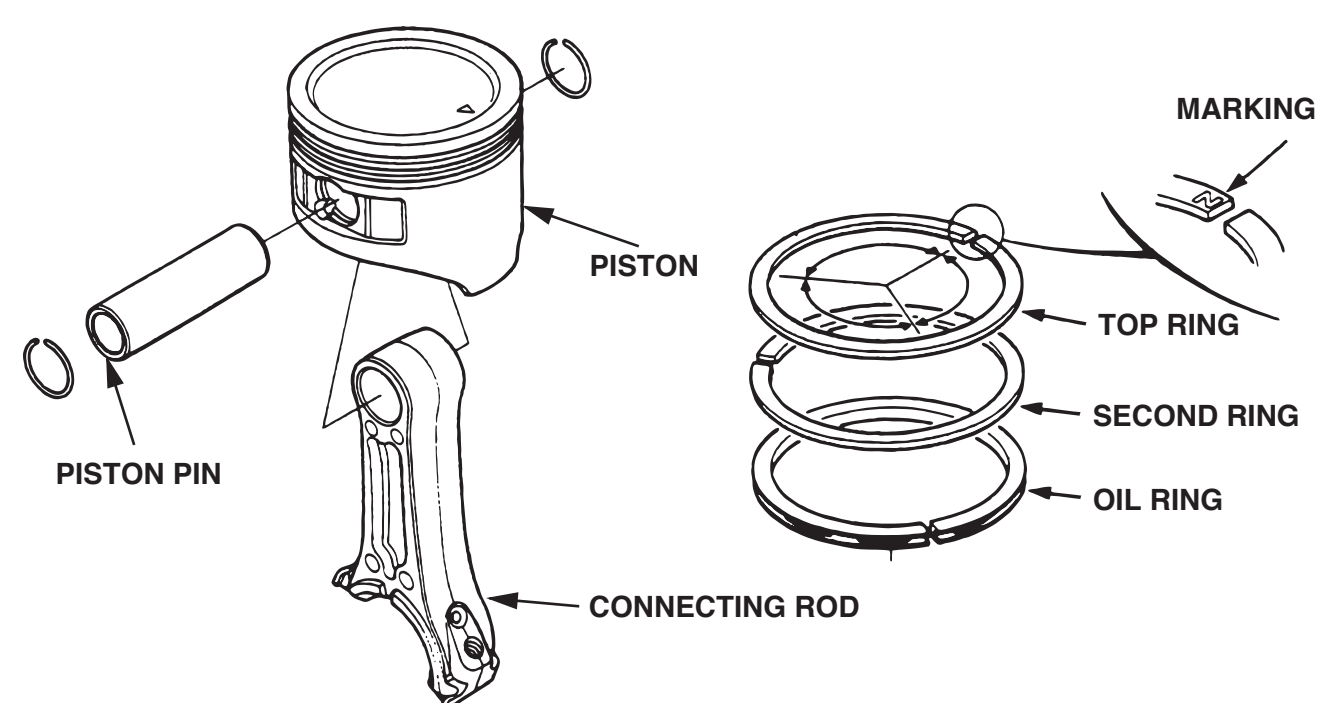


SPARK PLUG

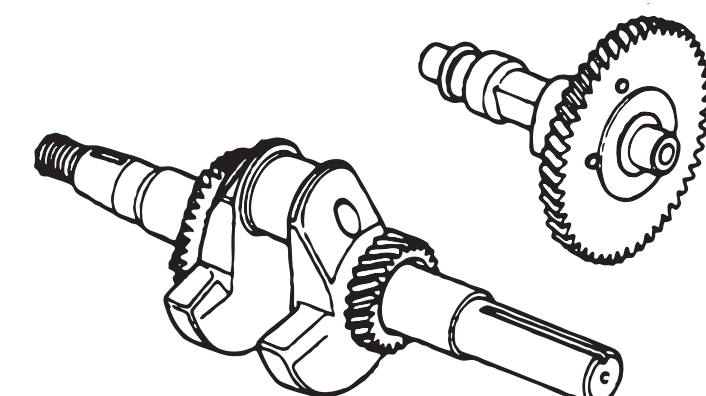


Spark plug gap	0.7-0.8mm (0.028-0.031 in)
Standard spark plug	BP6ES, BPR6ES (NGK) W20EP-U, W20EPR-U (*ND)

PISTON DISASSEMBLY/REASSEMBLY



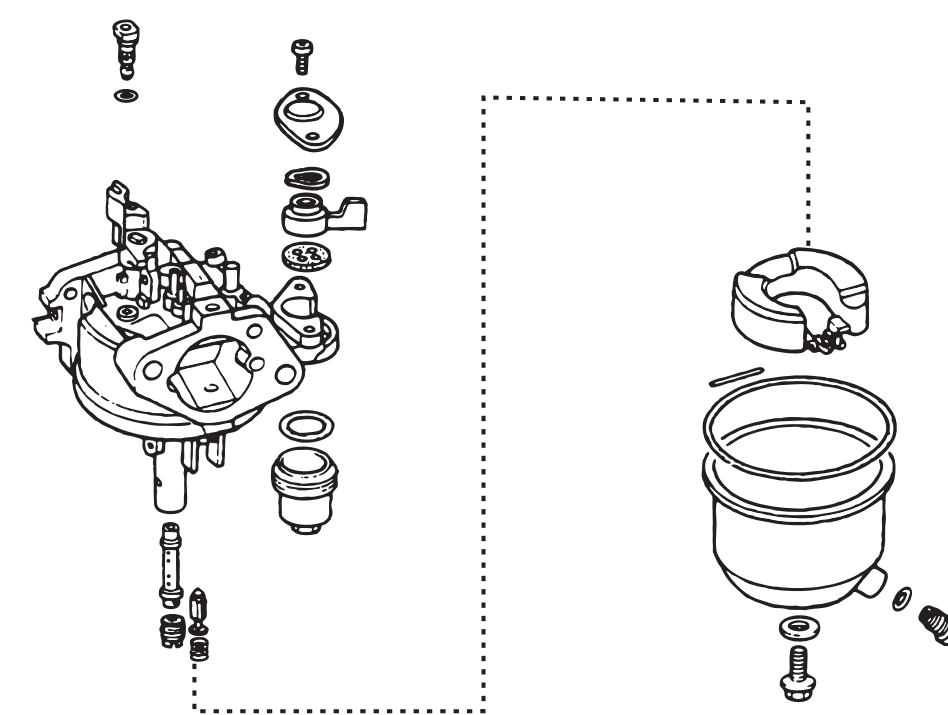
CAMSHAFT ASSEMBLY



REASSEMBLY:
With the crankshaft in place, align the timing punch mark on the cam gear with the punch mark on the crankshaft's cam drive gear.



CARBURETOR DISASSEMBLY/REASSEMBLY



CARBURETOR REMOVAL/INSTALLATION

